





## Park House, Milnrow Road, Shaw

£699,950

🛏 5 🚿 2 🛋 3

- Grade Two Listed
- One Acre Plot
- Five Bedrooms
- Large Cellar Rooms
- Private Hamlet
- Masses Of Original Features
- Over 4300 Sq Ft Of Accommodation

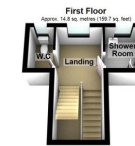
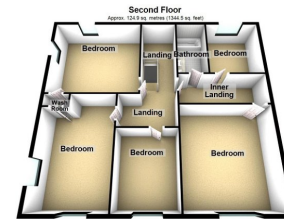
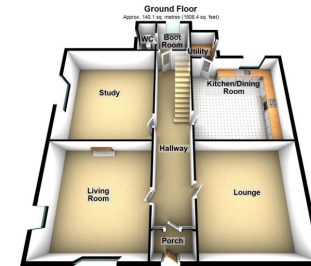
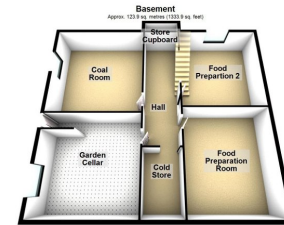


Nestled in the small private hamlet is Park House, a Grade II listed family home located in a very convenient position. Boasting a rich history dating back to 1650, this late Georgian stone house retains many of its original features, and is a fantastic one off property that is well worth a viewing. Park House is positioned on a plot of approx. one acre with mature gardens wrapping around three sides. Extensive views over countryside and offering a very private location yet close to all local amenities. Boasting over 4,300 Square Feet of accommodation including: Entrance porch, hallway, living room, lounge, kitchen/dining room, utility room, boot room, W.C and a large library/study. To the first landing there is a W.C and a shower room. To the second landing there are three large bedrooms, a small wash room and further storage. A further inner landing offers a large main bedroom, double bedroom and a good size bathroom.

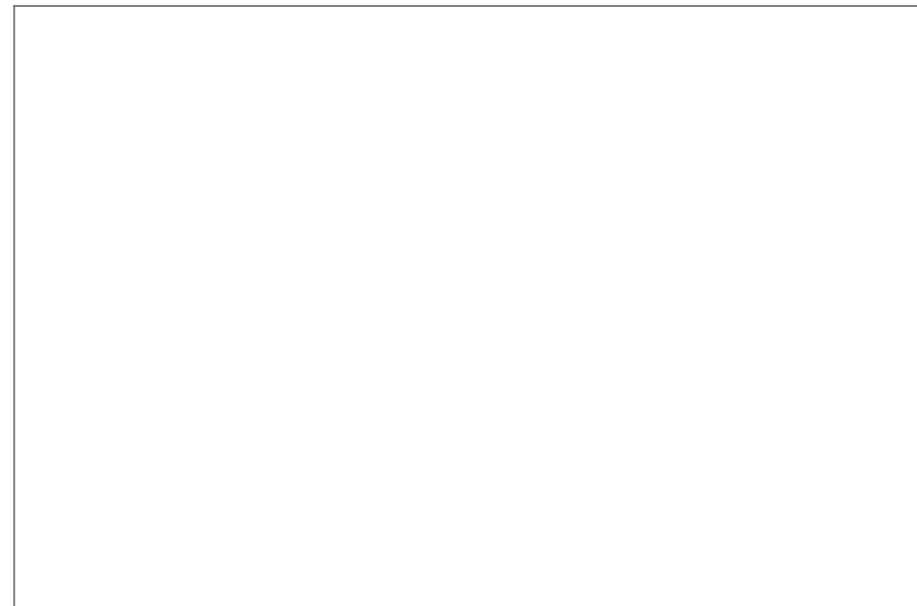








Total area: approx. 403.8 sq. metres (4346.5 sq. feet)



## Chadderton Office

509 Middleton Road,  
Chadderton, Oldham,  
OL9 9SH

[chadderton@kirkham-property.co.uk](mailto:chadderton@kirkham-property.co.uk)

t: 0161 626 5688